



So finden Sie Ihr gewünschtes Ersatzteil / Zubehör:

In dieser Ersatzteilliste finden Sie die Artikelnummer Ihres gesuchten Produkts. **Bitte geben Sie diese Artikelnummer in das „Suche“-Feld unseres Shops ein.**

Als Ergebnis wird Ihnen der Artikel mit Preis angezeigt und Sie können diesen bei Gefallen in den Warenkorb legen.

Sollten Sie das gesuchte Zubehör oder Ersatzteil nicht finden, helfen wir Ihnen gerne weiter.

Rufen Sie uns einfach an. Halten Sie bitte den Maschinentyp und das exakte Baujahr des Gerätes bereit:

Tel.: +49 (0) 7303 901 980

Robe Reinigungsmaschinen GmbH



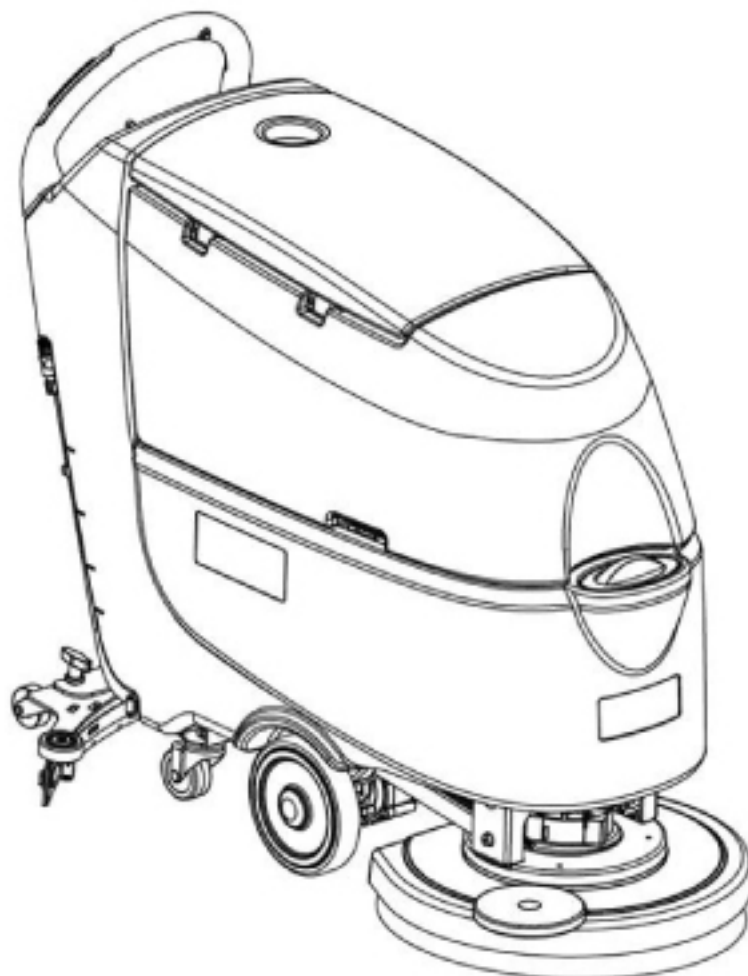
Hotline: 0 73 03 / 901 980

Zur Aumühle 36 | 89257 Illertissen
Tel.: 0 73 03 / 901 980 | Fax 0 73 03 / 901 981 8
info@wap-nilfisk-alto-shop.de

www.wap-nilfisk-alto-shop.de

Weiterblättern zur Ersatzteilliste →

PARTS LIST

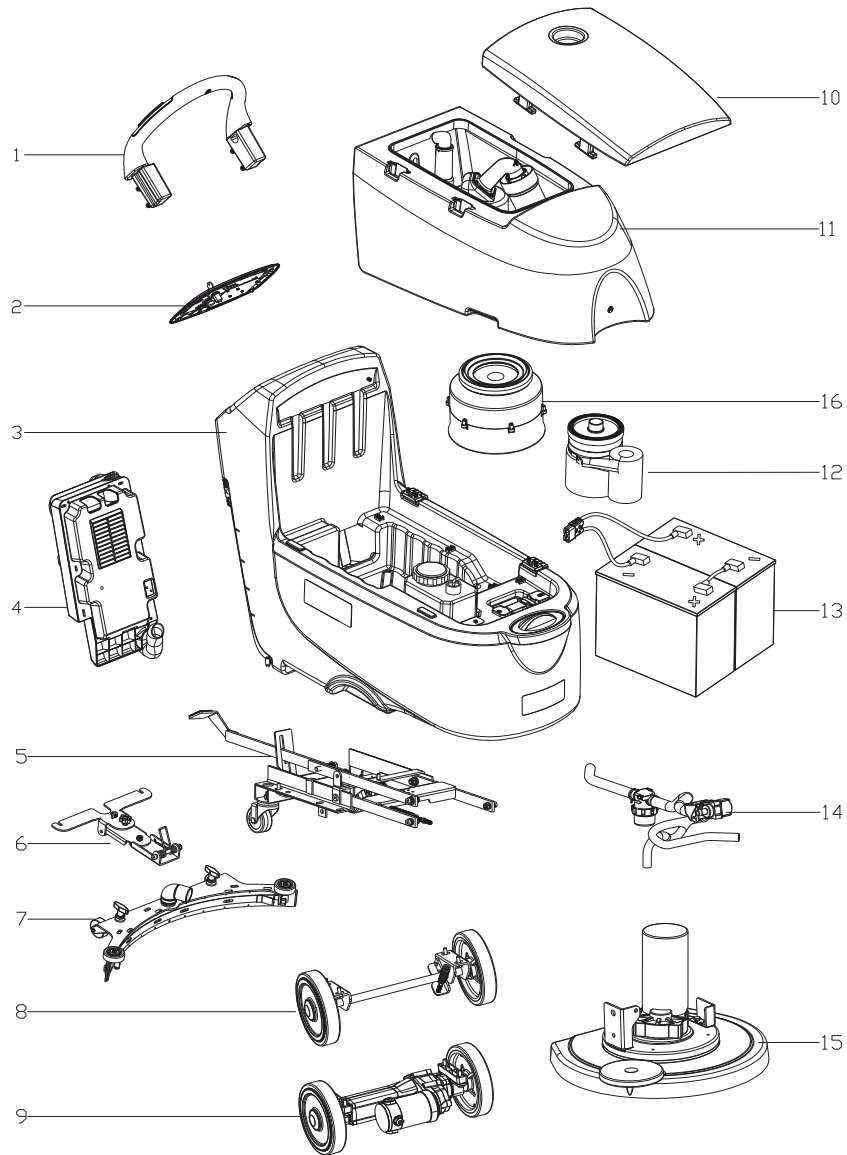


2024.10.16

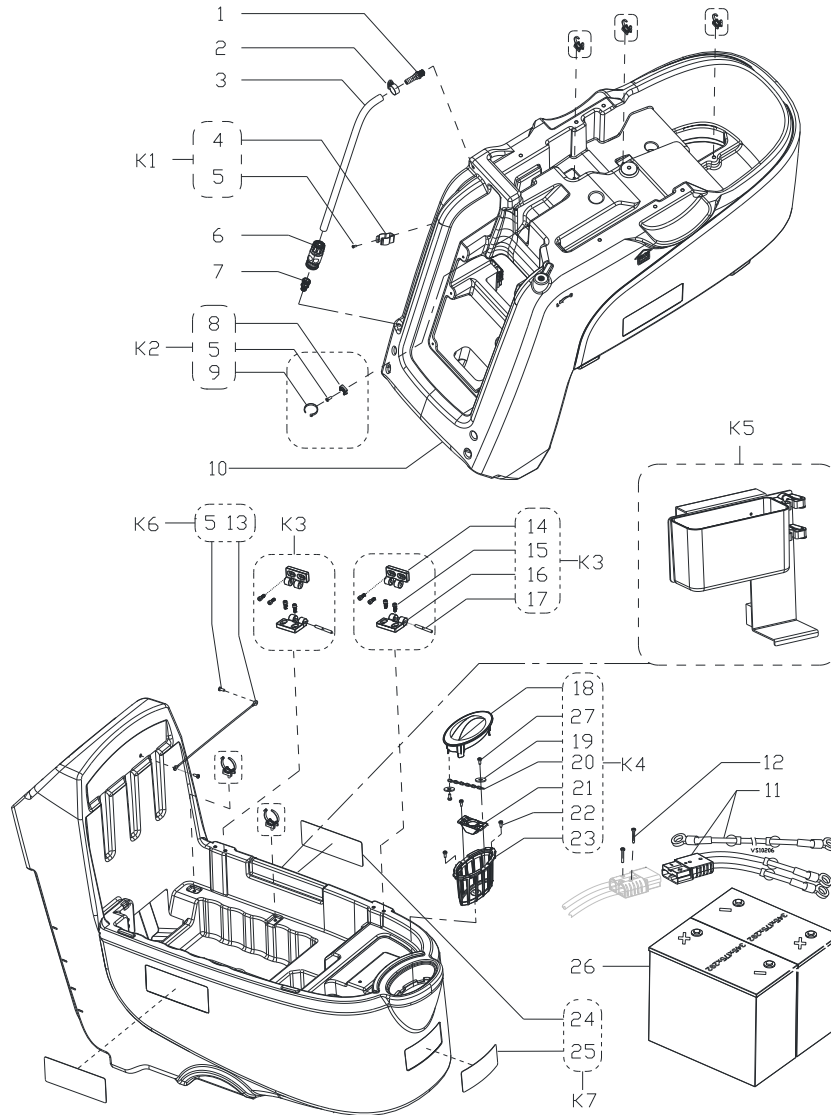
NILFISK

TABLE OF CONTENTS

GENERAL VIEW	1
SOLUTION TANK	3
RECOVERY TANK ASSEMBLY	5
HANDLE BAR AND CONTROL SYSTEM AND ELECTRICAL SYSTEM	7
CHASSIS SYSTEM	10
WHEEL ASSEMBLY	12
SOLUTION SYSTEM	14
SQUEEGEE ASSEMBLY	16
BRUSH ASSEMBLY	18
CHEMICAL MIXING SYSTEM	20
WIRING DIAGRAM WITH TRACTION	22



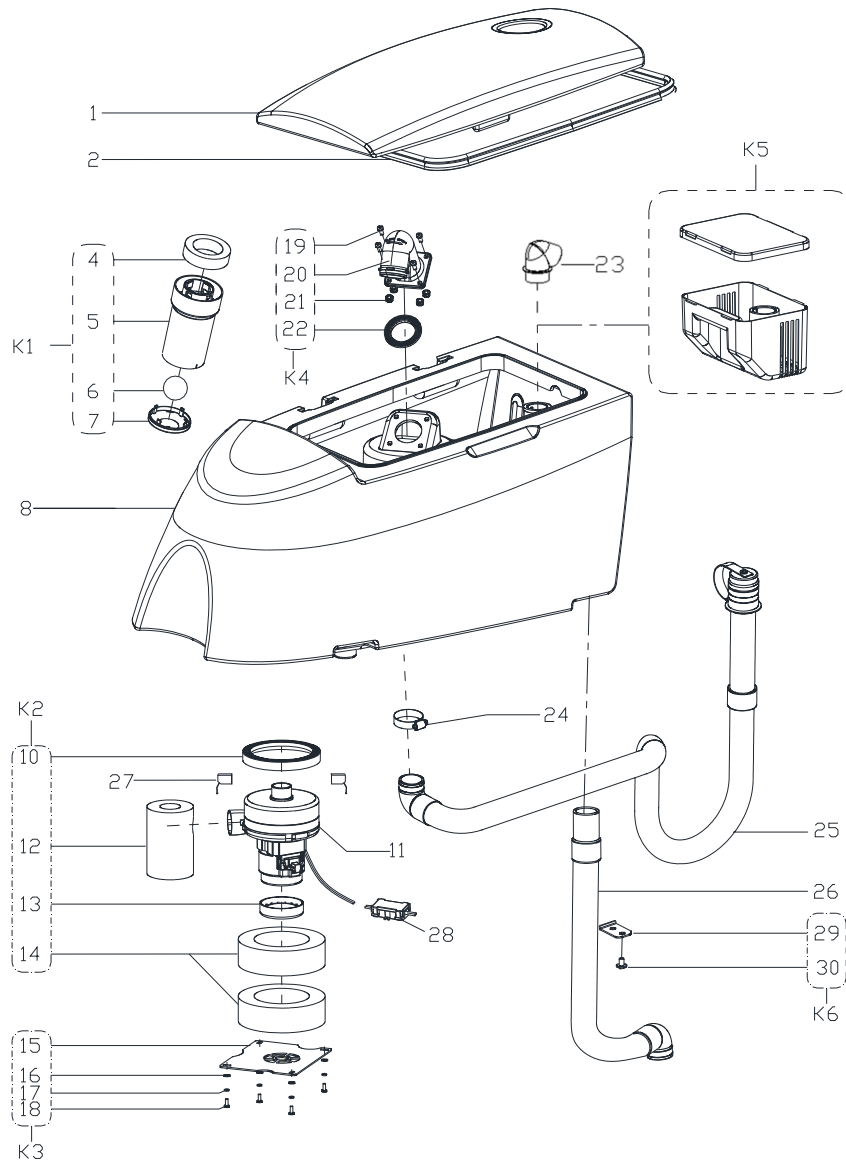
Pos.	Artikel-Nr.	Menge	Variante	Notes
1B		1	HANDLE BAR ASSEMBLY WITH TRACTION	
2		1	CONTROL PANEL ASSEMBLY	
3		1	SOLUTION TANK ASSEMBLY	
4		1	CONTROL BOX ASSEMBLY	
5		1	CHASSIS ASSEMBLY	
6		1	SQUEEGEE HOLDER ASSEMBLY	
7		1	SQUEEGEE ASSEMBLY	
9B		1	WHEEL ASSEMBY WITH TRACTION	
10		1	RECOVERY TANK LID ASSEMBLY	
11		1	RECOVERY TANK ASSEMBLY	
12		1	VACUUM MOTOR ASSEMBLY	
13		1	BATTERIES	
14		1	SOLUTION SYSTEM ASSEMBLY	
15		1	BRUSH DECK ASSEMBLY	



Pos.	Artikel-Nr.	Menge	Variante	Notes
1	VF85105	1	HOLDER RUBBER 1/4INCH TUBO D.10FITTING PIPE	
2	VV10114	1	Klammer	
3	55942615	1	TUBING D17.5X3XL485MM SIPTUBING D17.5X3XL485MM	
4		1	WATER HOSE HOLDER	
5		8	SCREW TM5X12	
6	VS13603	1	GARDEN COUPLING	
7	VS13308	1	FITTING PIPE	
8		6	FLAT TIE HOLDER	
9		6	CLAMP	
10	VS13301	1	SOLUTION TANK	
11	VS10206	1	BATTERY CONNECTIONS	
12	VF14070	2	SCREW M4X25SCREW TM4X25	
13	VF85435	1	RECOVERY TANK CABLE	
14		2	HINGE B	
15		8	SCREW TM6X16	
16		2	HINGE A	
17		2	PIN	
18	VS10312A	1	FILTER COVER	
19		2	WASHER Ø9XØ4.25X0.8	
20	VS10439	1	CHAINZIPPER	[1]
21		1	INLET PIPE FRAME	
22		2	SCREW ST4X15	
23	VS10313	1	FILTER SUPPORT	
24		2	DECAL NILFISK	
25		1	FRONT LABEL	
26*		2	BATTERIES	
27		3	SCREW TA3.5X12	
K1	55942616	1	WATER HOSE HOLDER KIT	
K2	VS13702	6	WIRE CLASPS KIT	
K3	VS13703	1	HINGE KIT	
K4	VS13704	1	FILTER COVER KIT	
K5*	9100002280	1	Mophalter, Zubehörkorb	[2]
K6	VF85007	1	TANK CABLE KIT	
K7	VS13815	1	DECAL KIT	

Part Notes:

- [1] - GUARANTEE DATE EXPIRED
- [2] - IS_9100002279_FOR KIT 9100002280
IS_9100002279_FOR KIT 9100002280



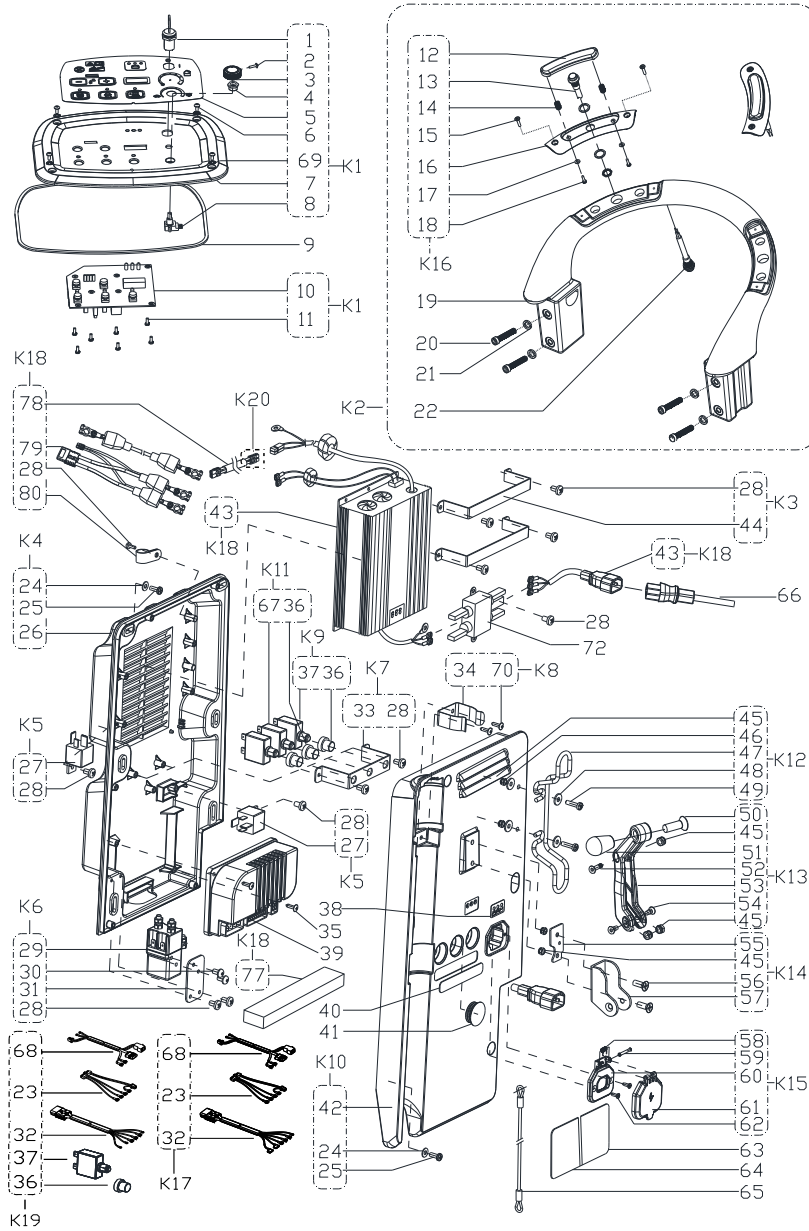
RECOVERY TANK ASSEMBLY

SC530 BD GO

2024.08.16

2024.10.02

Pos.	Artikel-Nr.	Menge	Variante	Notes
1	VS13303	1	RECOVERY TANK LID	
2	VS13607	1	TANKDICHTUNG	
4		1	CAGE, FLOAT COMPLETE	
5		1	FLOAT BRACKET	
6	30010021	1	FLOATING BALLFLOATE	
7		1	FLOATE BRACKET COVER	
8	VS13304	1	RECOVERY TANK	
10		1	GASKET	
11	VF90520	1	SAUGMOTOR	
12		1	ACOUSTIC INSULATION PIPE	
13		1	TOP GASKET OF SUCTION MOTOR	
14		2	ACOUSTIC INSULATION PIPE	
15		1	VACUUM MOTOR COVER	
16		4	WASHER Ø6XØ18X1.5	
17		4	SPRING WASHER Ø5	
18		5	SCREW TM5X15	
19		4	SCREW TM6X20	
20		1	ELBOW ADAPTOR, FLOAT	
21		4	NUT LOCK M6	
22		1	FLOAT GASKET	
23	VS13316	1	BEND TUBE	
24	VA20304	1	CLAMP	
25	VS13602	1	ABLASSSCHLAUCH	
26	VS10601	1	SAUGSCHLAUCH	
27	VF90522	2	KOHLEBÜRSTE FÜR VAKUUMMOTORCARBON BRUSH KIT	
28	VR27100	1	WATERPROOF CASE	
29#		1	HOSE CLAMP	
30#		1	SCREW TM5X12	
K1	VF90534	1	FLOAT KITFLOAT KIT	
K2	VS10112	1	GASKET VACUUM MOTOR KIT	
K3	VS10113	1	VACUUM MOTOR COVER KITVACUUM MOTOR COVER KIT	
K4	VS13720	1	ANSAUGSTUTZEN	
K5*	9100000795	1	Schmutzfang-Set	
K6#	VS13794	1	HOSE CLAMP KIT	



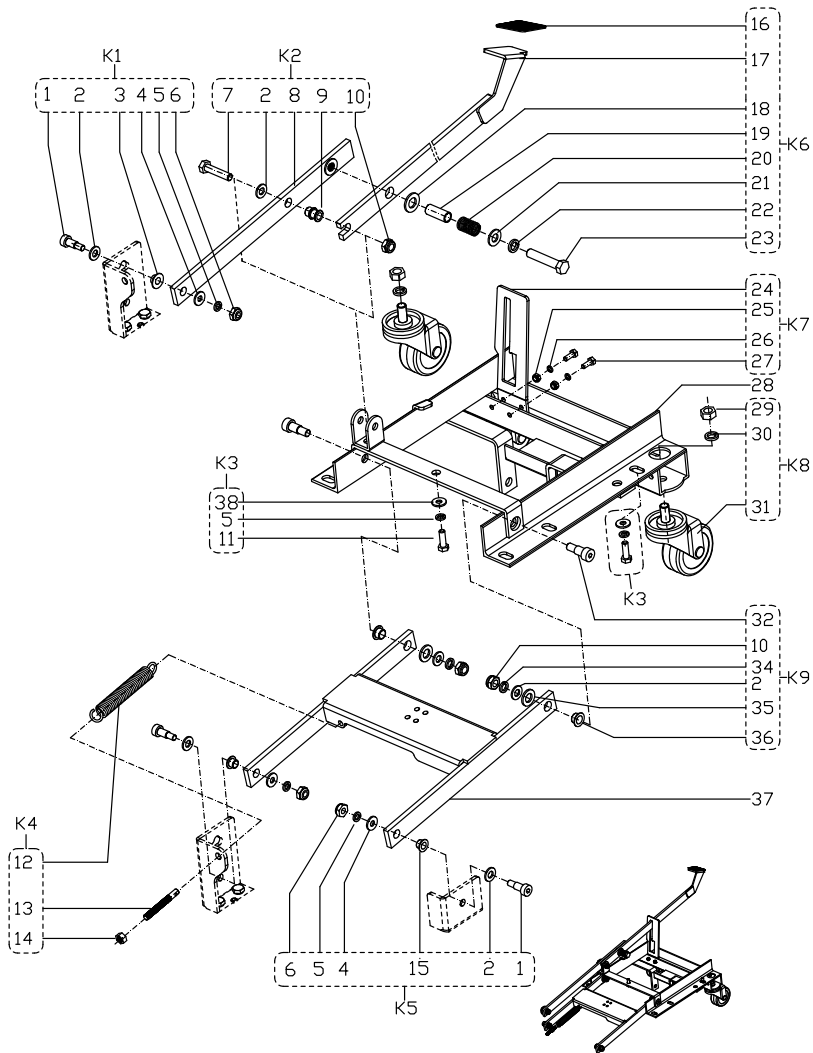
HANDLE BAR AND CONTROL SYSTEM AND ELECTRICAL SYSTEM

SC530 BD GO

2024.06.13
2024.06.14

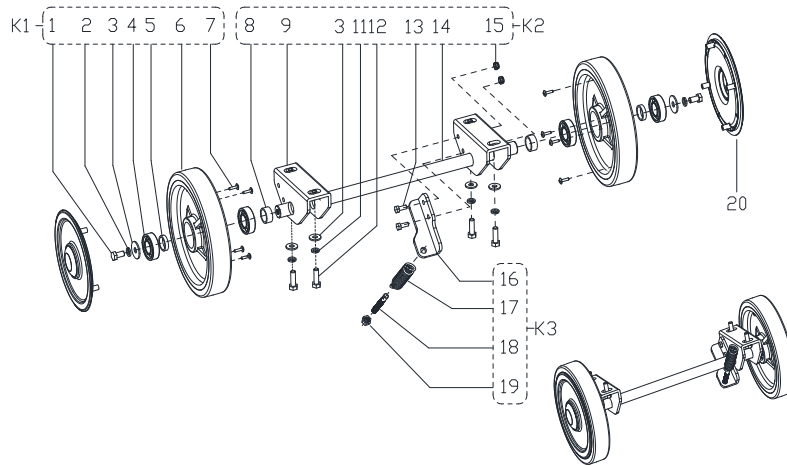
Pos.	Artikel-Nr.	Menge	Variante	Notes
1	9100001354	1	Schlüsselschalter komplettKEY SWITCH	
2B		1	SCREW ST3.5X12	
3B	VS10315	1	AJUST SPEED KNOBADJUST SPEED KNOB	
4B		1	KNOB NUT	
5B	VS13001	1	CONTROL PANEL DECAL WITH TRACTION	
6		4	SCREW M4X10	
7	VS13305	1	CONTROL PANEL	
8B	VS10213	1	POTENTIOMETER	
9	VS13604	1	EVA GASKET	
10	VS13201	1	CONTROL PANEL BOARD	
11		7	SCREW ST3.5X9.5	
12		1	SAFETY SWITCH KNOB	
13	VS10202	1	Schalter	
14		2	SPRING	
15		2	SCREW ST3.5X12	
16		1	SAFETY SWITCH COVER	
17		2	WASHER Ø3.6XØ8X0.5	
18		2	SCREW PA3X12	
19B	VS13309	1	HANDLEBAR WITH TRACTIONHANDLEBAR WITH TRACTION	
20		4	SCREW M8X40	
21		4	SPRING WASHER Ø8	
22B	VS10202	1	Schalter	
23B	VS10208	1	HARNESS CONTROL CIRCUIT WITH TRACTION	
24		10	WASHER Ø4	
25		10	SCREW M4X16	
26		1	CONTROL BOX BOTTOM	
27	VS10201	1	RELAY 24V	
28	VF13544	9	SCREW ST4x10SCREW ST4X10	
29	9095127000	1	ELECTROMAGNETIC SWITCHELECTROMAGNETIC SWITCH 24V	
30		2	SCREW PM4X8	
31		1	RELAY FIXED PLATE	
32B	55947971	1	HARNESS CONNECTOR WITH TRACTION	
33		1	FIX BRACKET	
34		1	CLAMP DRAIN HOSE	
35		4	SCREW 3.5X16	
36		1	CIRCUIT BREAKER CAP	
37	ZD48325	1	CIRCUIT BREAKER 30ACIRCUIT BREAKER	
38		1	LABEL BATTERY LEVEL	
39B	VS10209	1	FAHRELEKTRONIK	
40B		1	RESET LABEL WITH TRACTION	
41		1	CAP BLACK	
42		1	CONTROL BOX COVER	
#43	559502834	1	LADEGERÄT-KIT MIT MAGNETRING AGM 24V 13A24V 13A CHARGER KIT WITH MAGNET RING AGM	
44		2	CHARGER FIX BRACKET	
45		5	NUT LOCK M5	
46		2	WASHER Ø5X Ø12X1	
47		1	CABLE SUPPORT	
48		2	WASHER Ø6.2X Ø16X1	
49		2	SCREW M5X16	
50		1	SCREW M10X30	
51		1	KNOB	
52		1	SCREW M5X20	
53		1	HANDLE LIFT	
54		2	SCREW M5	
55		1	HAND FIX PANEL	
56		2	SCREW M5X25	
57		1	HAND BRACKET	
58		1	SPRING	

Pos.	Artikel-Nr.	Menge	Variante	Notes
59		1	ROLLER	
60		1	CHARGER SOKET FIX	
61		1	CHARGER SOKET COVER	
62		2	SCREW ST4X16 KA	
63		1	WARNING LABEL	
64A		1	SERIAL NUMBER LABEL	
64B		1	SERIAL NUMBER LABEL	
65	VS13503	1	CABLE SQUEEGEE LIFT	
66*	VF89725	1	LADEGERÄT NETZKABEL EU-STECKERBATTERY CHARGING CABLE EU	
66*	VF89726	1	CHARGER POWER CABLE UK PLUGBATTERY CHARGING CABLE UK	
67B	VF99012	1	Schutzschalter 12ACIRCUIT BREAKER	
68		1	HARNESS BRUSH MOTOR	
69		4	WASHER Ø5.5XØ11X0.8	
70		2	SCREW M4X16	
72#	VS13220	1	ELECTRONIC FILTER	
77#		1	SPONGE	
78#		1	EXTENSION WIRE	
79#		1	BATTERY CONNECTIONS	
80#		1	CABLE CLIP	
K1B	VS13714	1	Bedienfeld	
K2B	VS13715	1	HANDLE KIT WITH TRACTION	
K3	VS10125	1	CHARGER FIX BRACKET KIT	
K4	VS10121	1	CONTROL BOX BOTTOM KIT	
K5B	VS10230	1	RELAY 24V KITRELAY KIT	
K6	VS10231	2	ELECTROMAGNETIC SWITCH KIT	
K7	VS10122	1	FIX BRACKET KIT	
K8	VF90275	1	CLAMP DRAIN HOSE KIT	
#K9	VS13807	1	CIRCUIT BREAKER KIT	
K10	VS13719	2	CONTROL BOX COVER KITCONTROL BOX COVER KIT	
K11B	VS11201	1	CIRCUIT BREAKER KIT WITH TRACTION	
K12	VF90280	1	CORD WRAP KITCABLE SUPPORT KIT	
K13	VS13718	1	Hebel Saugbalkenhebung	
K14	VF90276	1	HAND BRACKET KIT	
K15	VS10126	1	CHARGER SOKET KIT	
K16	VS13708	2	FAHR DRUCKSCHALTER	
#K17B	559500107	1	HARNESS MACHINE KIT WITH TRACTION	
#K18	559502835	1	CHARGER KIT AGM WITH HARNESS 24V 13A	
#K19B	559500112	1	WIRE KIT W/CIRCUIT BREAKER W/TRACTION	
#K20	559504576	1	CHARGING CORD CONNECTOR	

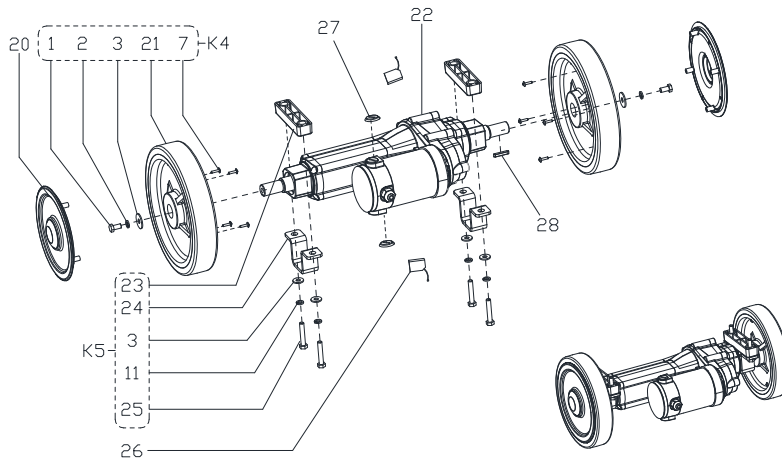


Pos.	Artikel-Nr.	Menge	Variante	Notes
1		3	SCREW Ø10X16XM8	
2		4	WASHER Ø10.3XØ25X2	
3		1	BUSHING	
4		3	WASHER Ø8XØ20X2	
5		5	SPRING WASHER Ø8	
6		2	NUT LOCK M8	
7		1	SCREW M10X45	
8		1	FRONT PEDAL BRUSH LIFTING	
9		1	BUSHING	
10		2	NUT LOCK M10	
11		3	SCREW M8X25	
12		1	SPRING	
13		1	AXIS	
14		1	NUT M8	
15		1	FLANGE BEARING	
16		1	PEDAL LEVER GASKET	
17		1	BACK PEDAL BRUSH LIFTING	
18		1	WASHER Ø15XØ28X2.5	
19		1	BUSHING	
20		1	RESET SPRING	
21		1	WASHER Ø12XØ24X2	
22		1	SPRING WASHER Ø12	
23		1	SCREW M12X60	
24		1	PEDAL SUPPORT	
25		2	NUT LOCK M6	
26		2	SPRING WASHER Ø6	
27		2	SCREW M6X22	
28	VS10406	1	CHASSIS	
29		1	NUT M12	
30		1	SPRING WASHER Ø12	
31#	VS13623	1	3 INCH CASTER	
32		1	SCREW Ø12X16XM10	
34		1	SPRING WASHER Ø10	
35		1	NYLON PAD	
36		1	FLANGE BEARING	
37	VS10404	1	BRUSH LIFTING SUPPORT	
38		3	WASHER Ø8xØ26x2	
K1	VS10134	1	SCREW KIT 1	
K2	VS10138	1	FORNT PEDAL BRUSH LIFTING KIT	
K3	VS10135	1	SCREW KIT 2	
K4	VS10139	1	SPRING KIT	
K5	VS10136	2	SCREW KIT 3	
K6	VS10140	1	BACK PEDAL BRUSH LIFTING KIT	
K7	VS10141	1	PEDAL SUPPORT KIT	
K8#	VS13757	2	3" Lenkräder	
K9	VS10137	2	SCREW KIT 4	

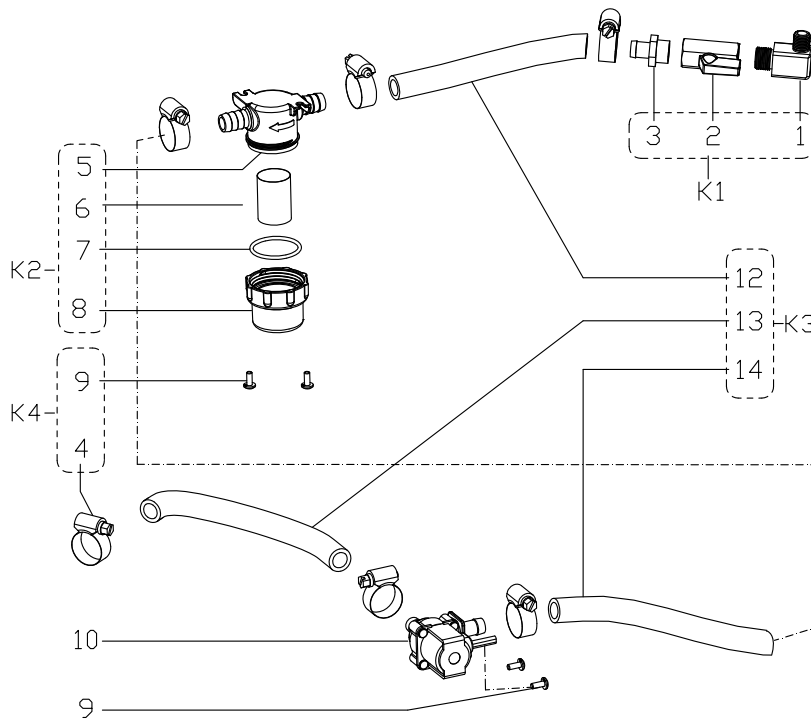
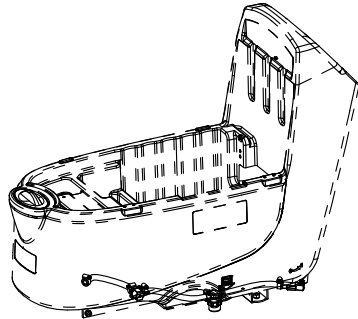
WHEEL ASSEMBLY (WITHOUT TRACTION)



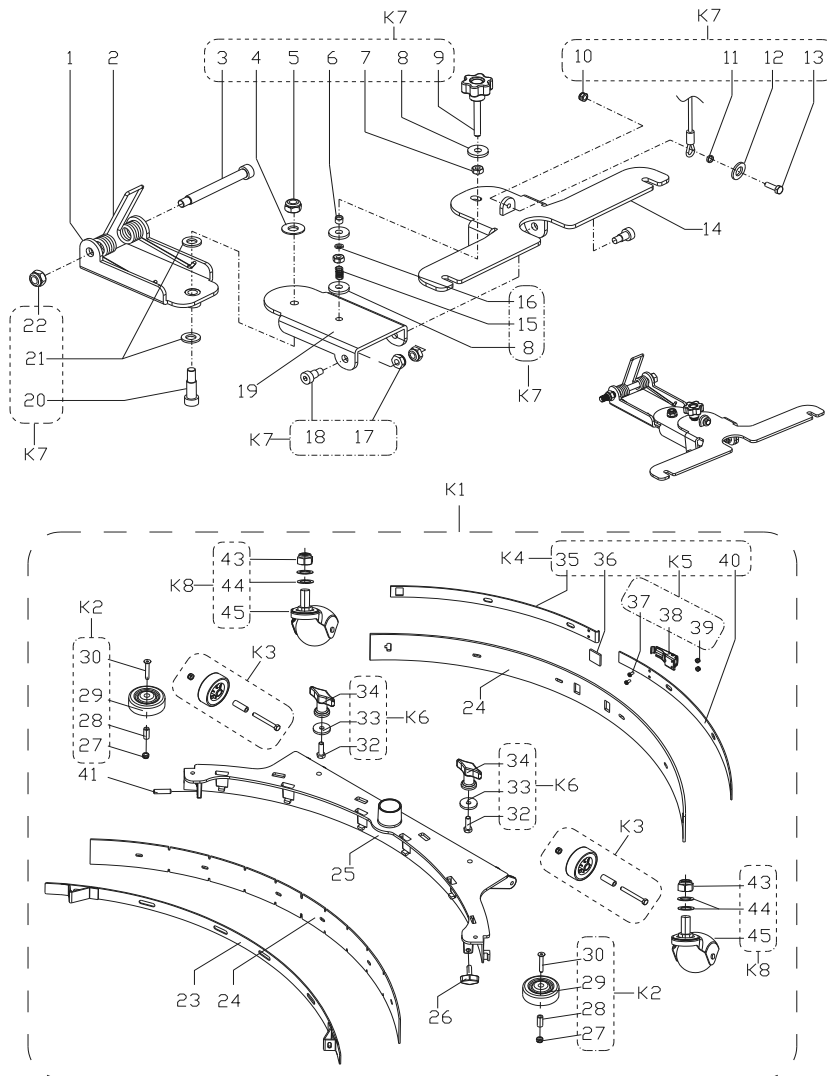
WHEEL ASSEMBLY (WITH TRACTION)



Pos.	Artikel-Nr.	Menge	Variante	Notes
1		2	SCREW M8X16	
2		2	SPRING WASHER Ø8	
3		8	WASHER Ø8XØ26X2	
7		8	SCREW ST3.5X16	
11		6	SPRING WASHER Ø8	
20	VS13314	2	RADABDECKUNG	
21B		2	8 INCH WHEEL WITH TRACTION	
22B	VS11702	1	ANTRIEBSMOTORMOTOR TRACTION	
23B		1	TRACTION MOUNT BLOCK	
24B		1	TRACTION MOUNT	
25B		2	SCREW M8X45	
26	VS11703	2	CARBON BRUSH KIT	
27#	VS11707	2	CARBON BRUSH COVER PLASTICCARBON CAP	
28#	VS11706	2	SCHLÜSSELPIN	
K4B	VS13710	2	8" RAD MIT KIT	
K5B	VS10147	2	TRACTION MOUNT KIT	



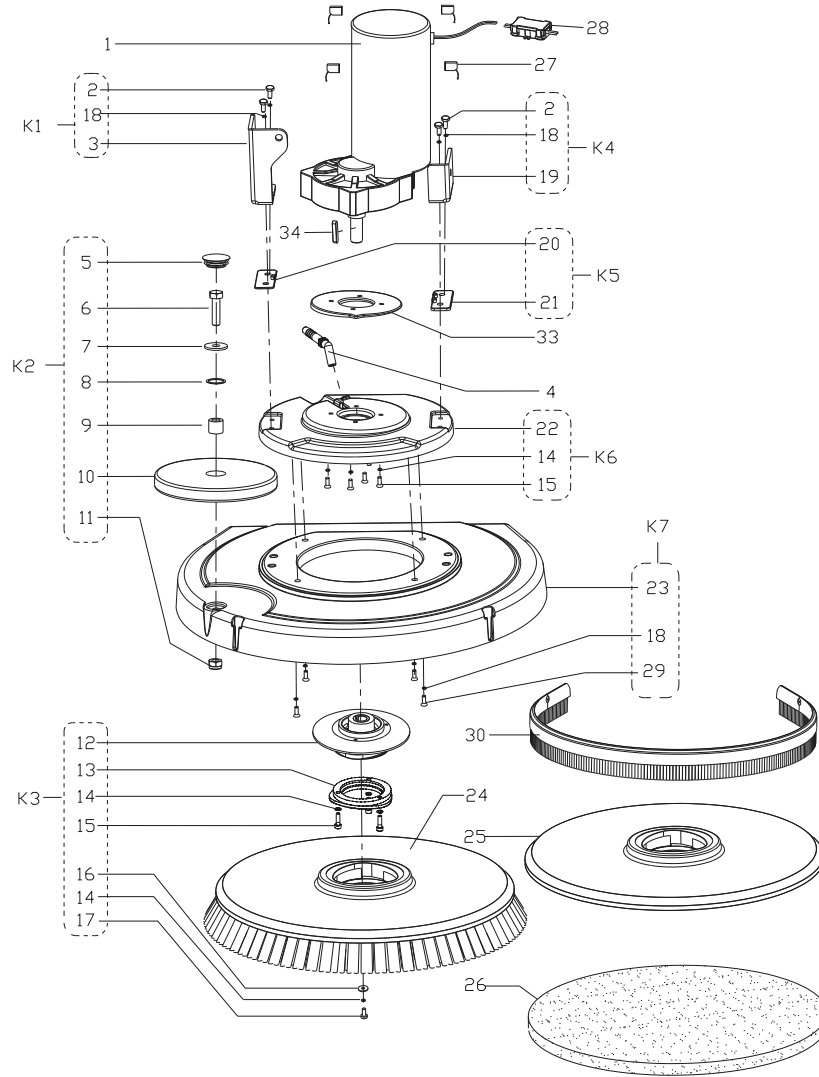
Pos.	Artikel-Nr.	Menge	Variante	Notes
1		1	ELBOW 90 BRASS	
2		1	BALL VALVE	
3		1	CONNECTOR	
4		6	CLAMP	
5		1	FILTER BASE	
6	VF90608	1	FILTER NET	
7		1	O-RING	
8		1	FILTER COVER	
9		4	SCREW M4X10	
10	VF90282	1	Magnetventil für AS430/510B+CSOLENOID VALVE	
11		1	TUBE Ø 20MM L250mm	
12		1	TUBE Ø20MM L240mm	
13		1	TUBE Ø20MM L235mm	
K1	VF91064	1	Kugelventil Satz	
K2#	VF90621	1	WASSERFILTERFILTER KIT	
K3	VS10149	1	TUBE KIT 750MMTUBE KIT 750mm	
K4	VS10148	1	SCREW AND CLAMP KIT	



Pos.	Artikel-Nr.	Menge	Variante	Notes
1	VS10401	1	FRONT SQUEEGEE SUPPORT	
2	VF91014	1	SQUEEGEE SPRINGSRING	
3		1	SCREW M12X115	
4		1	WASHER Ø10X Ø20X2	
5		1	NUT LOCK M10	
6		1	SPACER Ø8XØ10X6	
7		2	NUT M8	
8		3	WASHER Ø8XØ16.5X1	
9	VF85104	1	HANDWHEEL M8X55HAND WHEEL	
10		1	NUT LOCK M6	
11		1	SPACER	
12		1	WASHER Ø6.2X Ø16X2	
13		1	SCREW M6X20	
14	VF91012	1	COATING SQUEEGEE CONNECTOR PLATE	
15		1	SPRING	
16		1	SPRING WASHER Ø8	
17		2	NUT LOCK M8	
18		2	SCREW Ø10X11.5XM8	
19	VS13401	1	BACK SQUEEGEE SUPPORT	
20#		1	SCREW Ø12X16XM10	
21		2	NYLON SPACER	
22		1	NUT LOCK M12	
23	VF85311	1	SQUEEGEE FRONT STRAPSTRAP.SQUEEGEE FRONT	[1]
24*	9100000279	1	Sauglippen-Set, 740 mm, 29"BLADES NON MARKING KIT 740MM/29 KIT	
24*	909 6858 000	1	Sauglippenset PU, 740 mmBLADES PU KIT 740MM/29	
25	909 6044 000	1	SaugbalkenWELDMENT.SQUEEGEE TOOL	
26	9100000791	1	KNOB M8X30 THD STUD SS PKDKNOB M8X30 SS	
27		2	LOCK SELF L.M6 UNI7474 SS	
28		2	SPACER Ø6.3XØ9.5X21	
29		2	ROLLER BUMPER	
30		2	SCREW M6X40 UNI5933	
32		2	SCREW HEX THD 5/16X1-1/4 UNC	
33		2	WASHER.RUBBER	
34		2	NUT THUMB SQUEEGEE FIXING	
35		1	STRAP.SQUEEGEE LEFT REAR	
36		1	SPACER.RUBBER	
37		2	SCREW M4X10 UNI7687 SS	
38		1	LATCH SQUEEGEE	
39		2	NUT LOCK M4	
40		1	STRAP.SQUEEGEE RIGHT REAR	
41	909 6600 000	1	Schraube M8X30 UNI5929 SSSCREW GRUB M8X30 UNI5739 SS	
K1	909 6851 000	1	Saugfuß Kit komplettSQUEEGEE CPL ALU 760MM/30 KIT	
K2	909 6884 000	1	Abweisrollenkit BA 451	
K3	909 6883 000	1	Stützrad zu BA 451WHEELS SQUEEGEE 60X20MM KIT	
K4	909 6882 000	1	BefestigungskitHARDWARE SQU.BLADE FIXING KIT	
K5	909 6394 000	1	Verschluss BA 451	
K6	9097637000	1	Befestigungskit BA 551	
K7#	VS13711	1	HARDWARE SQUEEGEE SUPPORT KIT	

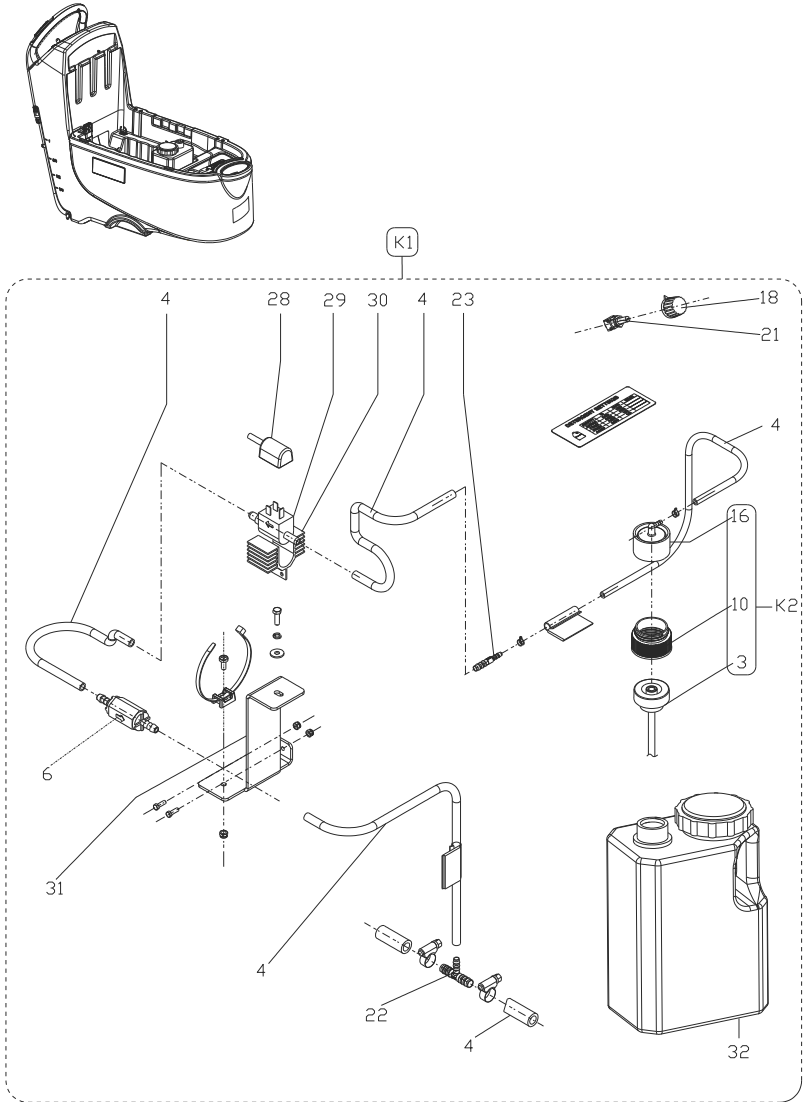
Part Notes:

[1] - EXPIRED USE 909 6055 000

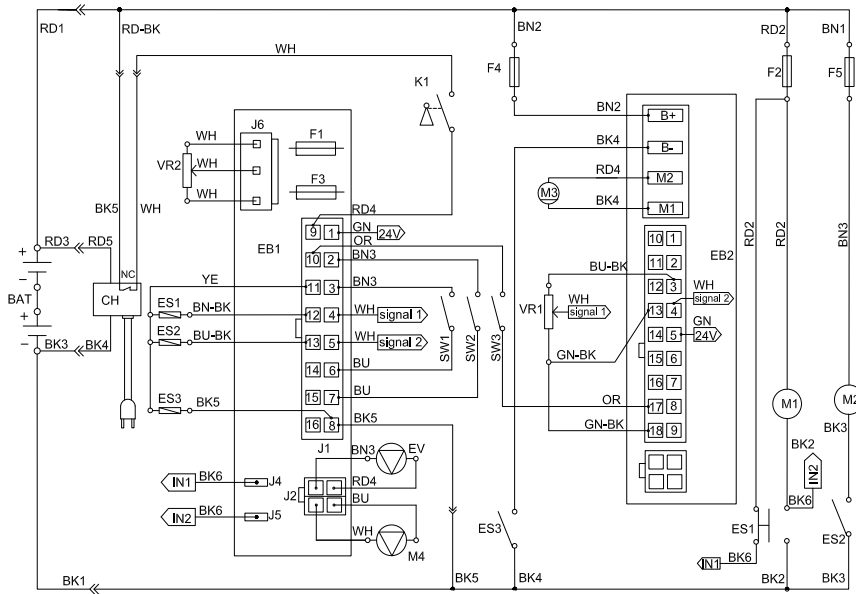


26

Pos.	Artikel-Nr.	Menge	Variante	Notes
1	VS10702	1	BÜRSTENMOTOR	
2		4	SCREW M8X25	
3		1	LONG CONNECTION PLATE	
4	VS10337	1	ELBOW	
5		1	CAP. BLACK	
6		1	SCREW M8X30	
7		1	FLAT WASHER Ø 24X Ø 8X2	
8		1	WAVE WASHER Ø15	
9		1	SPACER Ø 15XØ13X9	
10	VF91053	1	ROLLER BUMPER	
11		1	LOCK NUT M8	
12	VF85122	1	HUB BRUSH RIGHTHUB BRUSH R. GEARMOTOR RIGHT	
13	VF85129	1	BRUSH HUBHUB BRUSH	
14		8	SPRING WASHER, Ø6	
15		7	SCREW M6X20	
16		1	WASHER Ø 22X Ø 6X2	
17		1	SCREW M6X20	
18		8	SPRING WASHER Ø8	
19		1	SHORT CONNECTION PLATE	
20A		1	THIN PLATE T=1.8 MM	
21A		1	THICK PLATE T=4 MM	
22		1	MOTOR FIXING PLATE	
23#		1	BRUSH DECK	
24*	VF91040	1	BRUSH	
24*	L08837025	1	Bürste PPN mittel, 530 mmBRUSH DISC 530MM 21 PROLENE	
25*	9099671000	1	Padhalter Ø 508 mm, 20"PAD HOLDER 21 530MM	
26*	10001961	1	Eco Pad 21", Ø 533 mm, schwarz, VPE 5PAD 21 530MM ECO BLACK5PCS	
26*	10001962	1	Eco Pad 21", Ø 533 mm, blau, VPE 5PAD 21 530MM ECO BLUE 5PCS	
26*	10001963	1	Eco Pad 21", Ø 533 mm, braun, VPE 5PAD 21 530MM ECO BROWN 5PCS	
26*	10001964	1	Eco Pad 21", Ø 533 mm, grün, VPE 5PAD 21 530MM ECO GREEN 5PCS	
26*	10001965	1	Eco Pad 21", Ø 533 mm, rot, VPE 5PAD 21 530MM ECO RED 5PCS	
26*	10001966	1	Eco Pad 21", Ø 533 mm, weiß, VPE 5PAD 21 530MM ECO WHITE 5PCS	
26*	10002352	1	Eco Brill. Pad 21", Ø 533 mm, rot, VPE 2PAD 21 530MM ECO BRILLIANCE RED 2PCS	
26*	10002354	1	Eco Brill. Pad 21", Ø 533 mm, gelb, VPEPAD 21 530MM ECO BRILLIANCE YELLOW 2PCS	
26*	10002355	1	Eco Brill. Pad 21", Ø 533 mm, grün, VPEPAD 21 530MM ECO BRILLIANCE GREEN 2PCS	
27	VF89116	4	KOHLEBÜRSTEN-SET	
28	VR27100	1	WATERPROOF CASE	
29		4	SCREW M8X20	
30*#	VS13752	1	SPRITZSCHUTZ 20"	
33B#	VS11308	1	BALANCE BLOCK	
34#	VS11706	1	SCHLÜSSELIN	
K1	VS10127	1	LONG CONNECTION PLATE KIT	
K2	VF85017	1	BUMPER ROLLER KITROLLER BUMPER KIT	
K3	VF85002	1	POLYGONAUFNAHME MIT FLANSCH KITHOLDER POLYG W/FLAGE KIT	
K4	VS10132	1	SHORT CONNECTION PLATE KIT	
K5A	VS13712	1	PLATE KIT	
K6	VS10128	1	MOTOR FIXING PLATE KIT	
K7	VS13713	1	BRUSH DECK KITBRUSH DECK KIT	



Pos.	Artikel-Nr.	Menge	Variante	Notes
	9097159000	1	INSTALLATION INSTRUCTIONS CHEMICAL MIX- ING SYSTEM	
3		1	SYPHON HOSE VALVE (SEE ADAPTER CAP ASSY)	
4	9097175000	1	HOSES CHEMICAL MIX KITCHEMICAL MIXNG SYSTEM HOSE KIT	
6	9097030000	1	EINWEGVENTIL 1/4 PVCVALVE ONE-WAY 1/4	
10		1	ADAPTER (SEE ADAPTER CAP ASSY)	
16		1	CAP DRY BREAK (SEE ADAPTER CAP ASSY)	
18	145 4719 000	1	Drehknopf zuPotentiometer	
21	909 6076 000	1	Potentiometer BR 601POTENTIOMETER 50K	
22	909 6092 000	1	T- Stück	
23	909 6090 000	1	GUMMI-ANSCHLUSS D.6-DAHOLDER RUBBER STRAIGHT	
28	9097041000	1	KABELBAUM CHEMIE-PUMPECABLE CHEMICAL PUMP	
29	53721A	1	CHEMIEPUMPEPUMP CHEMICAL MIX	
30	61772A	1	BRACKET CHEMICAL PUMPBRACKET PUMP	
31	9097084000	1	BRACKET PUMP SUPPORT	
32#	56104190	1	Ecoflex-Behälter 5 Liter	
k1*	9097160000	1	Reinigungsmittel-Dosiersystem Kit o. KanCHEMICAL MIXING SYSTEM KIT	
K2*	54778A	1	Abdeckkappe f. Adapter,ADAPTER CAP ASSY (3-10-16)	
K3*#	56394293	1	56394293CHEM MIXNG SYSTEM-W /BOTTLE	



Pos.	Artikel-Nr.	Menge	Variante	Notes
BAT	N/A		Battery24V BATTERIES	
CH	VS10264		LADEGERÄT 24V 13ABATTERY CHARGER (#)	
EB1	VS13201		CONTROL PANEL BOARD	
EB2	VS10209		FAHRELEKTRONIK/ELECTRONIC BOARD (TRACTION SYSTEM)	
ES1	9095127000		ELECTROMAGNETIC SWITCH/ELECTROMAGNETIC SWITCH 24V (BRUSH)	
ES2	VS10201		RELAY 24V/RELAY 24V (VACUUM MOTOR)	
ES3	VS10201		RELAY 24V/RELAY 24V (TRACTION SYSTEM)	
F1	VS13208		LOW POWER CIRCUIT FUSE	
F2	ZD48320		SCHUTZSCHALTER 30A/CIRCUIT BREAKER (BRUSH MOTOR)	
F3	VS13209		BRUSH RELEASE FUSE	
F4	VF99012		Schutzschalter 12A/CIRCUIT BREAKER (TRACTION SYSTEM)	
F5	ZD48320		SCHUTZSCHALTER 30A/CIRCUIT BREAKER (VACUUM MOTOR)	
K1	9100001354		Schlüsselschalter komplett/KEY SWITCH	
M1	VS10702		BÜRSTENMOTOR/BRUSH MOTOR	
M2	VF90520		SAUGMOTOR	
M3	VS11702		ANTRIEBSMOTOR/DRIVE MOTOR	
EV	VF90282		Magnetventil für AS430/510B+CSOLENOID VALVE	
M4	N/A		Battery/DETERGENT PUMP (*)	
SW1	VS10202		Schalter/SAFETY SWITCH (BRUSH/TRACTION)	
SW2	VS10202		Schalter/SAFETY SWITCH (BRUSH/TRACTION)	
SW3	VS10202		Schalter/SAFETY SWITCH REVERSING	
VR1	VS10213		POTENTIOMETER/SPEED POTENTIOMETER	
VR2	N/A		Battery/DETERGENT PUMP POTENTIOMETER (*)	

